



# Safety Leadership Concepts



## Safety Leadership Concepts

### Responsibility for Safety

## Safety Leadership Concepts

### Responsibility for Safety

Is everyone responsible for safety?



## Safety Leadership Concepts

### Responsibility for Safety

Is everyone responsible for safety?

YES



## Safety Leadership Concepts

### Responsibility for Safety

Is everyone equally responsible?



## Safety Leadership Concepts

### **Responsibility for Safety**

Is everyone equally responsible?

NO...why not?



## Safety Leadership Concepts

# AUTHORITY for Safety



## Safety Leadership Concepts

The greater the **authority**...the  
greater the **responsibility**.



# Safety Leadership Concepts

## Authority

As such:

**Supervisors** are more responsible for safety than employees;



# Safety Leadership Concepts

## Authority

As such:

**Supervisors** are more responsible for safety than employees;

**Department Managers** are more responsible for safety than supervisors;



# Safety Leadership Concepts

## Authority

As such:

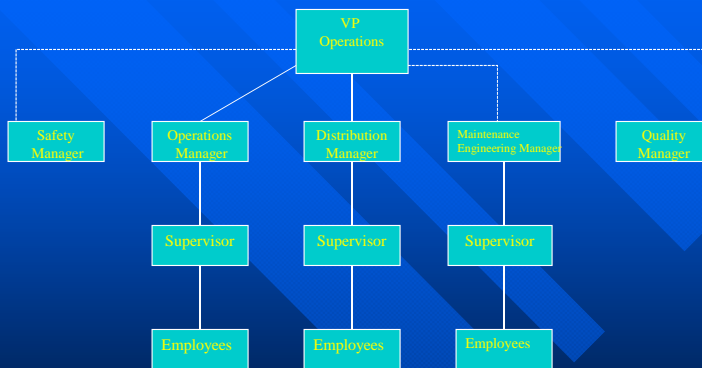
**Supervisors** are more responsible for safety than employees;

**Department Managers** are more responsible for safety than supervisors;

**Operation Managers** are more responsible for safety than department managers;



# Safety Leadership Concepts



## Safety Leadership Terms

- Responsible:



## Safety Leadership Terms

- Responsible: required to answer for one's conduct/obligations



## Safety Leadership Terms

- Responsible: required to answer for one's conduct/obligations;
- Authority:



## Safety Leadership Terms

- Responsible: required to answer for one's conduct/obligations;
- Authority: power to direct/enforce;





## Safety Leadership Terms

- Responsible: required to answer for one's conduct/obligations;
- Authority: power to direct/enforce;
- Accountable:



## Safety Leadership Terms

- Responsible: required to answer for one's conduct/obligations;
- Authority: power to direct/enforce;
- Accountable: answerable for results;



## Safety Leadership Terms

- Responsible: required to answer for one's conduct/obligations;
- Authority: power to direct/enforce;
- Accountable: answerable for results;
- Delegation:



## Safety Leadership Terms

- Responsible: required to answer for one's conduct/obligations;
- Authority: power to direct/enforce;
- Accountable: answerable for results;
- Delegation: assigning responsibility;



## Safety Leadership Terms

- Responsible: required to answer for one's conduct/obligations;
- Authority: power to direct/enforce;
- Accountable: answerable;
- Delegation: assigning responsibility;
- Line function:

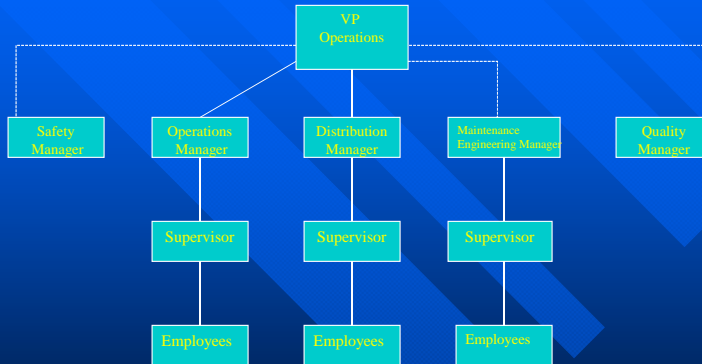


## Safety Leadership Terms

- Responsible: required to answer for one's conduct/obligations;
- Authority: power to direct/enforce;
- Accountable: answerable;
- Delegation: assigning responsibility;
- Line function: doers;



## Safety Leadership Concepts



## Safety Leadership Terms

- Responsible: required to answer for one's conduct/obligations;
- Authority: power to direct/enforce;
- Accountable: answerable;
- Delegation: assigning responsibility;
- Line function: doers;
- Staff function:

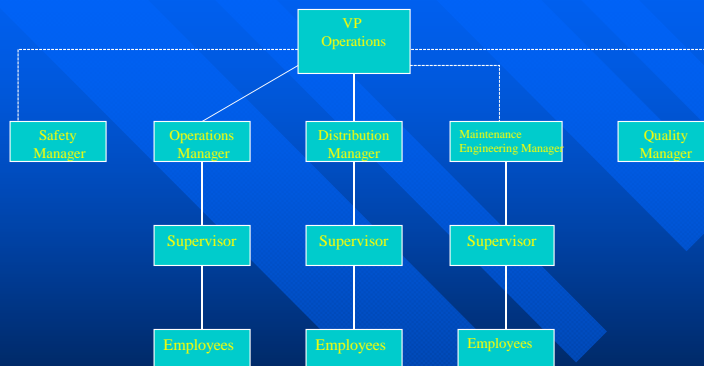


## Safety Leadership Terms

- Responsible: required to answer for one's conduct/obligations;
- Authority: power to direct/enforce;
- Accountable: answerable;
- Delegation: assigning responsibility;
- Line function: doers;
- Staff function: support/guidance



## Safety Leadership Concepts



# Leadership Effectiveness

## Key Leadership Traits



# Leadership Effectiveness

## Key Leadership Traits

Character

Competence



# Leadership Effectiveness

## Key Leadership Traits

Character (who I am)    Competence (what I know)

■ Integrity



# Leadership Effectiveness

## Key Leadership Traits

Character (who I am)    Competence (what I know)

■ Integrity

People Skills



# Leadership Effectiveness

## Key Leadership Traits

- | Character (who I am) | Competence (what I know) |
|----------------------|--------------------------|
| ■ Integrity          | People Skills            |
| ■ <b>Courage</b>     |                          |



# Leadership Effectiveness

## Key Leadership Traits

- | Character (who I am) | Competence (what I know) |
|----------------------|--------------------------|
| ■ Integrity          | People Skills            |
| ■ <b>Courage</b>     | <b>Vision</b>            |





# Leadership Effectiveness

## Key Leadership Traits

Character (who I am)

- Integrity
- Courage
- Consistent

Competence (what I know)

People Skills  
Vision



# Leadership Effectiveness

## Key Leadership Traits

Character (who I am)

- Integrity
- Courage
- Consistent

Competence (what I know)

People Skills  
Vision  
**Knowledgeable**



# Leadership Effectiveness

## Key Leadership Traits

- | Character (who I am) | Competence (what I know) |
|----------------------|--------------------------|
| ■ Integrity          | People Skills            |
| ■ Courage            | Vision                   |
| ■ Consistent         | Knowledgeable            |
| ■ Emotionally mature |                          |



# Leadership Effectiveness

## Key Leadership Traits

- | Character (who I am) | Competence (what I know) |
|----------------------|--------------------------|
| ■ Integrity          | People Skills            |
| ■ Courage            | Vision                   |
| ■ Consistent         | Knowledgeable            |
| ■ Emotionally mature | <b>Organized</b>         |



## Leadership Effectiveness Key Leadership Traits

- | Character (who I am)   | Competence (what I know) |
|------------------------|--------------------------|
| ■ Integrity            | People Skills            |
| ■ Courage              | Vision                   |
| ■ Consistent           | Knowledgeable            |
| ■ Emotionally mature   | Organized                |
| ■ <b>Inspirational</b> |                          |



## Leadership Effectiveness Key Leadership Traits

- | Character (who I am) | Competence (what I know) |
|----------------------|--------------------------|
| ■ Integrity          | People Skills            |
| ■ Courage            | Vision                   |
| ■ Consistent         | Knowledgeable            |
| ■ Emotionally mature | Organized                |
| ■ Inspirational      | <b>Goal Oriented</b>     |



# Leadership Effectiveness

## Key Leadership Traits

Character (who I am)

- Integrity
- Courage
- Consistent
- Emotionally mature
- Inspirational

Competence (what I know)

- People Skills
- Vision
- Knowledgeable
- Organized
- Goal Oriented



## Functions of Management

## Functions of Management

- Leadership
- Planning
- Organization
- Controlling

## Concept of Control

## Concept of Control

- Production/Construction/Service Control



## Concept of Control

- Production/Construction/Service Control
- Quality Control



## Concept of Control

- Production/Construction/Service Control
- Quality Control
- Cost Control



## Concept of Control

- Production/Construction/Service Control
- Quality Control
- Cost Control
- A\_\_\_\_\_ Control



## Concept of Control

- Production/Construction/Service Control
- Quality Control
- Cost Control
- Accident/incident Control



## Accident/Incident Control consists of a systematic effort to:

- Identify what needs to be done;
- Specify how it will be done;
- Ensure adherence to procedure/method;
- Provide feedback;





## Concept of Continuous Improvement

### Basis for Continual Improvement

1. Establish a standard/procedure/method
2. Maintain and/or enforce the standard
3. Challenge employees to improve safety standard/procedure

■ This cycle repeats continuously.....